

CrossRoads

Official newsletter of the



September 2006

SEPT. 16

SUWANEE Day
A Celebration Of Community

Fun, food, festivities all day long!
See pages 8-14

New City Hall will reflect Suwanee's history

City Council has selected BRPH of Marietta to design Suwanee's new City Hall, expected to open at Town Center in early 2009. BRPH was selected at an August 3 called Council meeting from among three design competition finalists, each of whom created a design concept for the new City Hall.

BRPH's initial concept is of a two-story, 20,000-square-foot building that features an arch-shaped roofline that echoes the Town Center amphitheater stage; open, glass front; 95-foot multipurpose tower; marble-panel facade; grand foyer; and second-floor Council Chambers.

What really impresses City Councilmember Alan Landers, who served on the City Hall design selection committee, is how the building serves as both a backdrop for Town Center Park and incorporates the park into its design.

"The BRPH design completes the unfinished ellipse at Town Center Park, creating a new outdoor civic space within the park," Landers says. "And when you're in the building, you'll still feel like you're in the park. In particular, the way that the Council Chamber is designed, when you're in that room, the room where the public will most often be, you'll still feel tied into the park."

Says BRPH's Scott Gordon: "We tried to create a magnificent indoor space that complements a great outdoor space."

Continued on page 2

Suwanee goes online and all out when it comes to customer service

The City of Suwanee is putting customer service at the top of its priority list and at citizens' fingertips. Beginning September 7, citizens will have 24/7 access to the City's new citizen/customer request management system via the Internet. A link to the new S.E.E. Online system will be available on the City's homepage, www.suwanee.com. Look for the S.E.E. [Suwanee Exceeds Expectations] Online logo.

"Our previous system didn't allow us to serve citizens as well as we would like when it comes to outstanding customer service," says Office Administrator Billie Marshall. "S.E.E. Online will

Continued on page 2

Inside this issue:

- Excellent! We did it againp. 2
- On the trail of safetyp. 3
- High-water mark in Suwaneep. 4
- SPLOST's big impactp. 6



Suwanee scores 'three-peat' in financial excellence

The City of Suwanee Financial Services Department has been recognized for the third consecutive year for excellence in financial reporting. The Government Finance Officers Association of the United States and Canada (GFOA) has presented Suwanee with a Certificate of Achievement for Excellence for its comprehensive annual financial report (CAFR) for the fiscal year ending in 2005.

"The Certificate of Achievement is the highest form of recognition in the area of governmental accounting and financial reporting," says a GFOA press release, "and its attainment represents a significant accomplishment by a government and its management."

An impartial panel judged that Suwanee's CAFR meets the high standards of the GFOA program, including demonstrating a constructive "spirit of full disclosure" to clearly communicate its financial story and motivate potential users to read the CAFR.

Suwanee's 127-page 2004-05 CAFR is available online under "Financial Documents" at www.suwanee.com/businessgrowth.reportsregulations.php.

New City Hall

continued from page 1

Landers also likes the fact that BRPH presented a functional interior design that allows access to all City departments from the front of the building and a design theme that is indicative of Suwanee's past.

The genesis for BRPH's design, says Gordon, came from a study of Suwanee's history.

"Suwanee is all about transportation," says Gordon, who, along with colleague Tim Pulver, presented BRPH's design concept. "The tie goes all the way back to the Indian trade routes, then the railroad, and today, the abundance of major roadways that go through Suwanee."

The design created by BRPH harkens not so much to a traditional train depot, which Gordon terms not grand enough, but more to a transportation center influenced by the nearby amphitheater stage and multi-use buildings at Town Center as well as historic buildings throughout Georgia.

Of the 18 firms that originally expressed interest in Suwanee's City Hall design competition, six were selected for interviews and three to present designs. The other two finalists who presented a concept were Rosser International and Sizemore Group.

The complete City Hall design process is expected to take about a year, and it is possible that some changes to BRPH's original concept will be made. Construction is slated to begin in September 2007.



Alan Landers

S.E.E. Online...continued from page 1

help City employees respond to citizens more efficiently."

As an example, Marshall notes, if a citizen is driving home at 6:30 p.m. and notices a stop sign down, they can inform the City via S.E.E. Online as soon as they get home. "Of course, you can still call us the next day," she says, "but it may be easier and more convenient to go to the website."



Customer service with a smile
Administrative Secretary Sonya Jones checks out Suwanee's new online citizen request system. Her warm voice is also the one that greets most people who call City Hall.

S.E.E. Online allows citizens to key in service requests or concerns (and even compliments) in a variety of categories, including animal control, building and housing, city government, code enforcement, neighborhood improvement, parks and landscaping, parking, public safety, utility franchises, and water and stormwater utilities. To submit a request, citizens complete a brief online form; once submitted, the information is routed to the appropriate City department. In addition, citizens can determine their preferred method of contact for responses as well as monitor the status of their request.

Marshall suggests that citizens read the First-Time Users Guide when they initially sign on to S.E.E. Online.

"Citizens are still and always welcome to call City Hall with service requests or concerns," notes Marshall. "We're not eliminating any services, this is an addition to services the City of Suwanee already provides."

In 2005, the City of Suwanee responded to 244 citizen service requests; through July this year, there had been 172 requests.

"S.E.E. Online will take customer service in Suwanee to a whole new level," Marshall promises.



Trek on Suwanee's trails safely

In the more than two years that the Suwanee Creek Greenway expansion has been open, the Suwanee Police Department has received no calls related to criminal activity on the multipurpose pathway. There have been some medical-related calls, a broken arm and diabetic episodes, for example. To help ensure that people using the greenway remain safe, the police department offers the following safety tips:

- 🚲 Let someone know where you plan to be on the greenway.
 - 🚲 Go with a partner whenever possible.
 - 🚲 Keep an eye on children and be sure that they know to always keep you visible as well.
 - 🚲 Wear bright clothing.
 - 🚲 Don't leave your purse, computer, or other valuables in view in your car.
 - 🚲 Carry a cell phone.
 - 🚲 If you have long hair, put it up (so that someone can't grab you by your hair).
 - 🚲 Always be aware of your surroundings and those around you.
 - 🚲 Be aware of where you entered and where you are on the greenway. Make note of which direction you're heading, roads you may have crossed under, landmarks, whether you're in an area that has boardwalk, buildings you may be able to see, etc.
 - 🚲 Carry a bottle of water and, if you're planning to travel far, perhaps a snack.
 - 🚲 Gwinnett County ordinance requires that all dogs be kept on a leash. (Shock collars don't count.)
 - 🚲 "Slower traffic" should keep to the right.
 - 🚲 If you're passing someone, it's courteous to announce: "Passing on the left."
 - 🚲 The use of iPods or other music systems with headphones or earbuds is OK, but be sure that the music isn't so loud that you can't hear or be aware of people around you.
- If you're on the greenway (or anywhere else) and for whatever reason you feel "creeped out":
- 🚲 Pay attention to your instincts and leave the area immediately.
 - 🚲 Call the Suwanee Police Department right away. When on the greenway only, it may be more expedient for residents to call the Suwanee Police Department directly at 770/945-8995, rather than 911.
 - 🚲 If you're approached, look the person in the eye; don't display any timidity or fear.
 - 🚲 Get a physical description of the person in question.
 - 🚲 Move toward people who are nearby, even if you don't know them.



Ofc. Jennifer Ellis



October events to be eerily fun

The City of Suwanee will host back-to-back family events that celebrate Halloween and fall festivities October 27 and 28.

Again this year, the City will host a Trek or Treat event from 11 a.m.-1 p.m. Saturday, October 28, at Suwanee Creek Park. In addition to free hot dogs and a Halloween costume contest, this fun event includes traditional fall festival activities such as bobbing for apples, dangling donut challenge, and trek or treating along the greenway.

Beginning at 7 p.m. Friday, October 27, the City will offer a fun new way to watch an old movie. A local band, the Mustangs, will provide a live soundtrack to a "scary" silent movie.



"The idea," says Amy Doherty, Suwanee's event coordinator, "is that the snippets of music that the band plays will add fun and humor to the movie viewing."

More details about both of these events will be available at www.suwanee.com around the middle of October.



Suwanee floodplain revised for the first time in 25 years

For the first time since 1981, Suwanee's floodplain has been revised.

While the results of a Gwinnett County study coordinated last year by the Federal Emergency Management Agency (FEMA) and the Georgia Environmental Protection Division (EPD) are "relatively minor," the significance of the study is fairly substantial, say City of Suwanee planning officials.

The newly generated digital flood insurance rate maps, says Marty Allen, Suwanee's director of planning and community development, are extremely accurate and provide a much more effective image of where the floodplain in Suwanee is located.

The new map, which is so detailed that it shows parcel lines, will become effective September 29 and will be available online at www.msc.fema.gov and for viewing at City Hall.

"This new map," says Allen, "is much more accurate and includes all the development that has occurred since 1981. Fortunately, flood elevations in Suwanee have not risen very much, and that's a good thing."

Wes Rogers, the City's senior environmental planner, notes that most of the changes in flood levels along Suwanee's creeks are relatively minor. Suwanee's floodplain is rather narrow compared to other areas, he adds, because of the many variations in topography and elevations.

Floodplain designations identify existing flood hazards based on 100-year floods or floods that have a 1 percent likelihood of occurring. The changes made may affect whether or not homeowners are required to purchase flood insurance.

The floodplain changes made along creeks within Suwanee are listed below:

- Brushy Creek: one-foot increase in elevation
- Ivy Creek: four-foot increase
- Level Creek: one-foot increase
- Mill Creek: two-foot increase
- Suwanee Creek: one-foot decrease

Renovations, enhancements coming to City Hall, Town Center Park

The City is poised to undertake three separate renovation/enhancement projects at City Hall and Town Center Park, all as part of one contract.

At City Hall, the Council meeting room is being transformed into working space for up to eight people, and new offices and evidence storage areas are being created within the police department. At Town Center Park, the green room, which is a space for performers, will be finished and lighting will be added to the stage area. The City has contracted with C.B. Summer Construction Co., Inc. to do the projects, which are expected to be underway by the time this newsletter is printed.

The projects, to be completed over a couple-month period, will be done essentially one after the other and will begin within the police department.

The police department is using \$32,500 in SPLOST funds (a portion of the \$500,000 that has been set aside for police renovations once the new City Hall opens in 2009) to convert a storage closet and one former jail cell into office space. Two other jail cells will be converted into evidence storage areas.

“The police department needed more space yesterday,” says Mark Guleserian, Suwanee’s capital improvement projects manager. “With recent staff additions and promotions, they simply can’t ‘make do’ any longer.”

The former City Council chambers will be converted, using cubicles, into workspace for up to eight staff members.

City Hall “is busting at the seams,” Guleserian says. The new space will allow a more professional-looking and efficient work area for current staff members who work in cramped areas (including the reception area, a shared office in what used to be a storage closet, and Guleserian’s “office” in the City Hall lobby) as well as for potential new staff that may be hired over the next two years before the new City Hall is completed.

The City will spend about \$36,000 from its general fund to remove the raised table at the front of the room where Council and board members sit; make adjustments to the doors, including adding one; and install cubicles, electrical and data ports, and office furniture. The City plans to re-use the carpet that’s already in the room.

“We’re not talking about a Cadillac-style project here,” Guleserian notes. “This will be bare bones to get us through the next two-and-a-half years until the new City Hall is ready.”

At Town Center Park, both aesthetic lighting to illuminate the stage at night and functional “break down” lighting for performance tear-down will be installed. In addition, a unisex bathroom for performers and the green room will be completed and a small office area created.

This project is expected to cost about \$28,000 and will be paid using SPLOST funds.

With the transformation of Council chambers into office space, beginning September 1, all monthly City meetings—City Council, Planning & Zoning, and Zoning Board of Appeals—will be scheduled in the meeting room at the Suwanee Crossroads Center, 323 Buford Highway, where municipal court also is held.

What is this number?

115

Number of regularly scheduled City Council meetings held since 1997 in City Hall chambers, now being converted to office space.

City seeks input on alternative transportation

The City of Suwanee is seeking public input as it creates an Alternative Transportation Master Plan that will utilize sidewalk, greenway, and bike path systems to connect Suwanee locations both within the City limits and in a regional context.

A open house is scheduled for 5-7 p.m. Thursday, October 26, at North Gwinnett High School. The open house will offer an opportunity for citizens to provide commentary to City officials. In addition, residents can share information regarding usage of Suwanee’s current alternative transportation network by taking a brief online survey available at www.suwanee.com/survey.

The master plan, being developed by Duluth-based Street Smarts, will look at “where people want to get to within the City,” notes Street Smarts’ Keith Hogsed and how to get them there. The plan also will look at how Suwanee’s network can fit in regionally with alternative transportation efforts being undertaken in other communities.

Suwanee’s alternative transportation plan, expected to be completed by the end of the year, will look for opportunities to expand upon the City’s current network of sidewalks, trails, and bike paths by filling in gaps, finding ways to cross major impediments such as Peachtree Industrial Boulevard and the railroad track, and connecting areas to the Suwanee Creek Greenway.

SPLOST's impact in Suwanee

SPLOST funds are making a difference in Suwanee. When voters approved the one-penny Gwinnett County SPLOST (Special Purpose Local Option Sales Tax) in 2004, Gwinnett's 14 municipalities were ensured for the first time that they would receive a guaranteed portion of the funds generated based on their population.

Suwanee's anticipated \$6.6 million allocation over a four-year period will allow the City to complete road resurfacing and storm drainage projects, finish projects already underway or planned at a higher caliber than otherwise would have been possible, and get to parks and connectivity projects that otherwise would have to wait a few years.

To date, Suwanee, in the first year of the program, has received just over \$2 million in SPLOST allocations. Through July 31, the City has spent \$597,095 of its SPLOST funds.

"Due to other priorities, we haven't gotten to some of our larger SPLOST projects yet," notes Special Projects Manager Kristi McCarley.

SPLOST funds have been used for the City's annual street resurfacing program and storm drainage improvements. However, the majority of SPLOST funds spent so far have been used at Town Center Park for the Big Splash interactive fountain and enhancing the electrical system at the park for special events. (The Suwanee Day committee also donated \$10,000 to help enhance electrical capabilities at Town Center Park.)

Many of the future projects that will be covered using SPLOST funds relate to the City's parks.

"Except for the \$2.6 million set aside for the first phase of Sims Lake Park, the City's [\$17.7 million] Open Space bond funds have been exhausted," McCarley notes. "Anything else we want to do to enhance the parks will have to come from SPLOST or new revenue sources."

Future SPLOST parks-related projects to be undertaken over the next four years include:

- adding a pavilion and creative play area to PlayTown Suwanee (\$350,000)
- constructing a pedestrian bridge to connect the Suwanee Creek Greenway and the Town Center area (\$330,000)
- rehabilitating the older section, the Richard Trice Trail portion, of the Suwanee Creek Greenway that runs from Martin Farm Road to George Pierce Park in order to improve its usability (\$550,000)
- pedestrian improvements at Buford Highway and Town Center Park that will make it easier to cross the busy roadway (\$338,000).

Other future projects to which SPLOST funds have been allocated include:

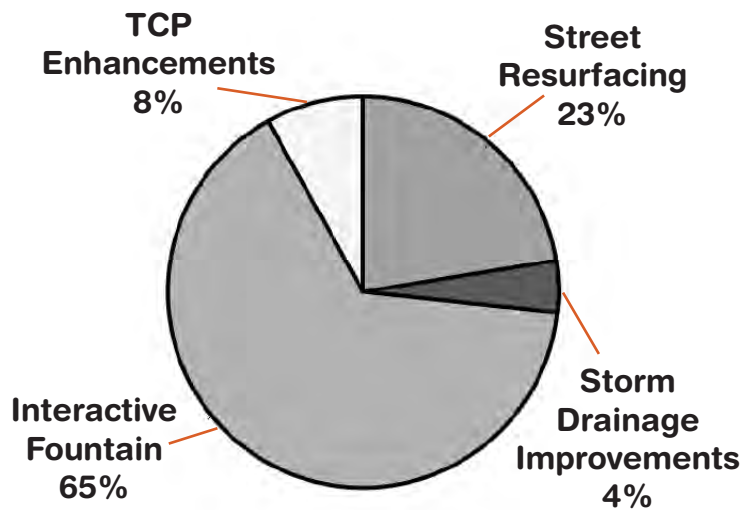
- implementing streetscape enhancements in the Suwanee Gateway (I-85) area (\$969,660)
- expanding police department facilities once the new City Hall is completed (\$500,000)
- creating an Alternative Transportation Master Plan, a process which is currently underway, and implementing recommendations (\$400,000)
- implementing traffic-calming measures along Eva Kennedy Road (\$253,500).

"SPLOST provides us with an assurance that over the next four years the City can fund specific projects that will improve our parks, enhance connectivity, or otherwise improve the quality of life in Suwanee," says McCarley.



SPLOST's splash The Big Splash interactive fountain is one of several projects partially funded through SPLOST.

SPLOST Expenditures (to date)



Welcome to City Hall

Three new officers—well, two new officers and a returning officer—have joined the Suwanee Police Department.

Ivan Spindola has 15 years of experience in law enforcement with the Hall County Sheriff's Office and Georgia Department of Corrections, but most recently worked as a business broker with Business House, Inc. A Flowery Branch resident, he is fluent in Spanish.

Suwanee resident Robert Thompson previously worked as a law enforcement officer for DeKalb County Police, most recently in the motorcycle unit. While in DeKalb, Thompson was frequently nominated as officer of the month. In February, he was nominated for writing 117 citations and making four arrests.

The Suwanee police department welcomes back George Gordon, who has returned after a brief stint with another local law enforcement agency. A Cumming resident, Gordon was a Suwanee officer for five years before leaving earlier this year.

CODE CORNER

Permit required for banners, etc.

Business owners should be aware that changes related to temporary advertising devices, such as banners, recently were adopted.

Banners, streamers, pennants, and similar temporary advertising devices require a permit, which may be obtained at City Hall. This permit allows for display of temporary advertising devices for a period not to exceed 30 days in any four-month period.

At no time can any advertising device be placed on any right of way, utility pole, tree, or traffic control device. All temporary advertising devices are to be displayed no farther than 10 feet from the applicant's leased space. In the case of a common area, one banner will be allowed per common area, and the permit will be issued to the landlord or property owner only.

All non-recreational inflatable devices such as advertising balloons are prohibited.

Paws up for Petapalooza

The crowd at Town Center Park on August 19 for Petapalooza had their tongues hanging out. Nearly 1,000 dogs and about 6,000 humans came out on a typically hot summer day for Star 94's "pet party in the park."

The crowd was treated to several dog demonstrations, including agility, fly ball, and frisbee, coordinated by Woof! Sports as well as a varied musical line-up, which featured Kimberley Locke of *American Idol* fame.



CELEBRATE



SUWANEE Day

A Celebration Of Community

Suwanee Day 2006 Schedule

SEPTEMBER 16 • TOWN CENTER PARK

Free shuttle transportation from off-site parking begins ~ 9 am

Parade ~ 10 am

Arts & crafts exhibitors ~ 10 am – 5 pm

Inflatable rides, children's activities ~ 10 am – 6 pm

Free entertainment ~ 11 am – 10 pm

Atlanta Rhythm Section ~ 8 pm

Fireworks ~ 9:45 pm

Free shuttle transportation to off-site parking ends ~ 11 pm



Kids play all day

Suwanee Day is a great place to be a kid! Children can enjoy bouncing...sliding...climbing...throwing...and spinning.

Fun-Fare will provide eight inflatable rides in the Primrose Schools of Suwanee Children's Area from 10 a.m.-6 p.m. Wristbands will be sold for \$7 and will provide access to the Fun-Fare inflatable rides all day long. Rides include:

- A 22-foot Giant Slide
- Noah's Ark
- Dragon Obstacle Course
- Double Decker Bus
- Pirate Ship Adventure
- Carousel Bounce
- Spike's Dog House
- Thomas the Train



Other kid-friendly rides and exhibits include the Kiwanis dunking booth, Glenn's Duck Pond, a princess dance party, balloon shapes, speed pitch booth, and gyrosphere. Each of these rides/activities is priced individually.

Festival arts and crafts exhibitors offer one-of-a-kind shopping experience

It's so much fun to shop at arts and crafts festivals: You just can't find some of this stuff in stores. And, even if you could, the items wouldn't have that handmade originality that you find at festivals like Suwanee Day, which was selected this year as one of Southeast Tourism Society's Top 20 Events for the month of September.

Consider just a few of the products you'll find at Suwanee Day 2006:

- birdhouses made from ceramic teapots
- chain maille jewelry that combines an ancient craft with a contemporary flourish
- painted gourds that serve as a canvas for landscapes
- skirts made out of pants
- original oil paintings of the Suwanee Creek Greenway
- custom-made photo jewelry
- wearable, crocheted art
- one-of-a-kind wood boxes, spheres, and art frames.

Oftentimes, woodworker Paul Proffitt of Suwanee will make something for one customer only to have it admired by another, who inevitably asks if he "can make another one just like it."

Not really, Proffitt has to reply, though he's happy to make something similar.

"I enjoy making unique wood items that celebrate the range and intensity of character found in wood," says Proffitt. "It's hard to make two exactly alike."

Suwanee Day will be the first festival at which Proffitt and his wife, Annette, will exhibit. Their wide variety of Whispered Images wood items include bowls, boxes, vases, platters, carved animals, place mats, spheres, display stands, art frames, valets, laser-engraved plaques, and furniture.

Proffitt has enjoyed woodworking for more than 35 years. "I have worked with 500-year-old heart pine as well as dogwood that was cut yesterday," he says. "I enjoy working with cherry, walnut, and maple with their beautiful color and figure. I also enjoy working with exotic woods...."



He adds: "Woodworking is fun and so is watching when someone just *has* to touch a piece that we have made."

Gina Renay of Duluth hopes that people won't be able to resist *wearing* her art forms.

"I take a little piece of thread and hook and create fashion or fabric," says Renay, or, in other words, she says, "a walking piece of art."

What she creates, Renay insists, is not your grandmother's

crochet. She crochets scarves, hats, earrings, chokers, hair scrunchies, ponchos, and even suits and dress ensembles. "I add a lot of embellishments," she says, including feathers, beads, and buttons.



Renay and her family relocated to Gwinnett County last year following Hurricane Katrina. The family was living in Escatawpa, Mississippi, when the hurricane struck the Gulf Coast. They had evacuated to the Atlanta area because they have family members here. Renay says that she lost a good deal of inventory in the storm, but is eager to get back into doing shows.

While in Mississippi she had a half-hour television show, called *The Aweslome Crochet, You Go Girl Show*.

"I'm absolutely awed by the intermarriage of hook and yarn to reproduce such lovely prodigy," she says.

Sugar Hill's Kristen Anderson of The Silver Box, who is back for her third Suwanee Day festival, wants people to wear her artwork as well. Anderson, who makes jewelry, has recently switched from mostly beaded pieces to chain maille and woven metals.

"I'm trying to take an ancient art form," says Anderson, "and give it a modern, contemporary approach by combining it with gem stones and art glass."

The wire-wrapped and chain maille jewelry, she finds, sets her apart from other vendors. "People see so much of the beaded jewelry," Anderson says. "This sets me apart more."

Anderson will have a limited inventory of classic beaded pieces as well as bracelets, watches, earrings, and necklaces in her newer style. Many of her pieces coordinate with one another. "I find that people really like sets, to find things that go together," says the artist.

Ingrid Bolton will exhibit another classic art form at Suwanee Day—oil paintings. She'll also have with her gourds painted with landscapes, such as Tiffany scenes, sunflower fields, and humming birds. Bolton says that her gourds are "a little more 'painterly' than most."



Bolton also will have original oil paintings of roosters and the Suwanee Creek Greenway.

"You just have to get yourself out there and share what you have, what inspires you," Bolton says. "It makes you feel like an artist."

In addition to fine art pieces and the items mentioned above, Suwanee Day shoppers will find a treasure-trove of handmade



Entertainment Schedule

- Brian Clay & Kompani ~ 11 am
- Shadowbrook Praise Band ~ 11:45 am
- Jim Tozier Interlude ~ 12:30 pm
- Suwanee Academy of the Arts ~ 12:45 pm
- Cheer & Dance Atlanta ~ 1:15 pm
- Lljatasuyo ~ 2 pm
- Super Fun Show ~ 2:45 pm
- Ashley Rivera ~ 3:15 pm
- Two Hour Drive ~ 4:15 pm
- Andy Velo ~ 5:15 pm
- Jessica Urich ~ 6:30 pm
- Atlanta Rhythm Section ~ 8 pm

Entertainment line-up offers great music & 'super fun'

This year's Suwanee Day musical line-up features several young singers who have the potential to make it "big" while the headline performer is a group that was one of the biggest within the Southern rock genre more than two decades ago. Several performers are Suwanee favorites who are returning to the Town Center stage and many are performing in Suwanee for the first time.

The musical flavors to be served up at Suwanee Day range from smooth jazz to classic rock, from country to traditional Andean tunes. In addition, the Atlanta JayHawks will offer an energetic performance, and Shawn Brown and Natalie Mentor will provide children with a "super fun" show.

Be sure to visit the Town Center stage area while at the festival and let Suwanee Day entertain you!

■ Brian Clay & Kompani ~ 11 a.m.

A favorite from this summer's Suwanee Smooth Jazz 107.5 Concert Series, Kompani has captivated audiences throughout the Atlanta area with incredible live performances and its blend of smooth grooves and urban rhythms with inspirational vocal arrangements. Featuring Brian Clay and Pamela Best, Kompani takes its audiences on a varied musical journey that includes cover as well as original songs that range from the laid back to sultry to urban contemporary.



■ Shadowbrook Praise Band ~ 11:45 a.m.

This group of talented musicians from Shadowbrook Baptist Church boasts superb instrumentation and vocal power. The band performs contemporary Christian music, with a tendency toward rock, but also some softer tunes.

■ Jim Tozier Interlude ~ 12:30 p.m.

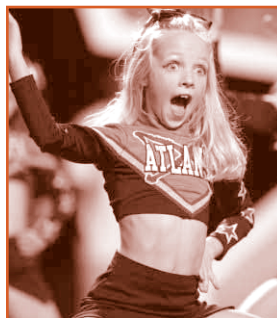
An acoustic fingerstyle guitarist who performs traditional Celtic tunes and original compositions inspired by his Irish heritage, Jim Tozier has recently moved to Georgia and is beginning to make a name for himself throughout the area. He has released two CDs, one that features traditional Irish and Scottish tunes and the other, his original contemporary compositions. *Guitar Nation* calls Tozier "one of the most eloquent Celtic guitarists in the world."

■ Suwanee Academy of the Arts ~ 12:45 p.m.

Suwanee Academy of the Arts proudly presents the Suwanee Ballet's debut performance. In *Ballet Daze*, the troupe will bring Edgar Degas' painting *The Ballet Lesson* to life. Look for cute and interesting things to happen during this "lesson." *One Summer's Day*, a modern ballet performance choreographed by Melissa Joy, will take the audience through a summer day from start to finish.

■ Cheer & Dance Atlanta— Atlanta JayHawks ~ 1:15 p.m.

Cheer & Dance Atlanta is the proud home of the national champion Atlanta JayHawks cheerleading and dance teams. This group of enthusiastic young people is sure to offer an energetic performance. The JayHawks compete regionally and nationally and perform exhibitions in local communities.



■ **Llajtasuyo ~ 2 p.m.**

Llajtasuyo offers a contemporary interpretation of the rich musical and folkloric traditions of the Andes region, which includes the countries of Argentina, Bolivia, Chile, Ecuador, and Peru. A crowd favorite at Suwanee Day last year, Llajtasuyo will offer again this year a rich musical and cultural journey.



photo by M. Michael Farr

■ **Super Fun Show ~ 2:45 p.m.**

Shawn Brown and Natalie Mentor offer a curriculum enhancement program presented in a television format, but kids don't realize how much they're learning—they just find the show exhilarating and outrageously fun. Through the show, young children are encouraged to explore the world around them, participate in aerobic activity, and enhance motor skills. If this troupe's website, www.superfunshow.com, is any indication, this indeed promises to be a "super fun show." This performance is sponsored by Motorola.

■ **Ashley Rivera ~ 3:15 p.m.**

At 17, Ashley Rivera already has years of experience performing her unique brand of country music,



fashioned by a combination of rock, pop, jazz, and blues influences. Having performed since she was 10, Rivera now has an impressive resume; her appearances

include Radio Disney, Mall of Georgia, Zoo Atlanta, Centennial Olympic Park, and the Colgate Country Showdown. She was a finalist on Ed McMahon's *Next Big Star* and has opened concerts for Ronnie Milsap, Aaron Carter, and Raven Symone.

■ **Two Hour Drive ~ 4:15 p.m.**

If you've been to the Suwanee Monterrey's restaurant recently, you may have been fortunate enough to catch Charlie Boland and Andrew Leanza. This duo thoroughly entertains whether they're performing ballads or classic rock favorites. Two Hour Drive currently is recording a CD, *Somewhere to Be*, in Nashville with renowned producer George Clinton, who worked with the group Alabama.

■ **Andy Velo ~ 5:15 p.m.**

Catch this local favorite and North Gwinnett High School graduate before he becomes a big-time movie star this December with the anticipated holiday release of *We Are Marshall*, in which he has a significant "extra" role as "Freshman #4." Despite his brush with Hollywood, Velo says that "country music is still my life" and he continues to pursue a singing career.



photo by M. Michael Farr

■ **Jessica Urich ~ 6:30 p.m.**

This extremely talented singer, songwriter, and musician hailing from Grayson isn't likely to stay local long. Jessica Urich was named "The Most Popular Unsigned Female Artist in Atlanta" by www.atlantacountrymusic.com last November. In May 2005, she won the local slot representing KICKS 101.5 FM in the Colgate



photo by M. Michael Farr

Country Showdown. Urich and her band 4 Story currently are recording a CD.

Atlanta Rhythm Section to rock Suwanee Day

Southern rock legend Atlanta Rhythm Section will be the headline performer at Suwanee Day, taking the Town Center stage at 8 p.m. One of several Southern rock groups to top the charts in the late 1970s, Atlanta Rhythm Section originally was a recording studio house band based in Doraville. The group's biggest hits include *So Into You*, *Champagne Jam*, *Spooky*, and *Imaginary Lover*.

"I am really excited about having Atlanta Rhythm Section come to Suwanee," says Scott Snead, Suwanee Day entertainment chairperson. "I remember seeing them when I was in college back in '79, and they really put on a great show. Every time I hear the words to *Doraville*, 'touch of country in the city', I think of Suwanee. I hope all their old fans will show up to make them feel welcome."



With 15 albums of outstanding material, ARS represents all the good things the phrase "classic rock" implies. Atlanta Rhythm Section has a reputation for being accomplished musicians, having excellent original material, and putting on consistently entertaining live shows.



Parade gets festival off on right foot

When Police Chief Mike Jones puts his foot on the gas pedal of his car and hits the siren to lead off the 10 a.m. parade, the Suwanee Day festival is officially underway.

The parade route up Main Street, from Stonecypher Road to Suwanee Dam, and then down Buford Highway to Russell Road, is just a bit over one mile. A grandstand for parade judges will be set up on Buford Highway near the Crossroads Center and participants are encouraged to perform for the judges.



photo by M. Michael Farr

Prize categories for decorated floats and other entries include:

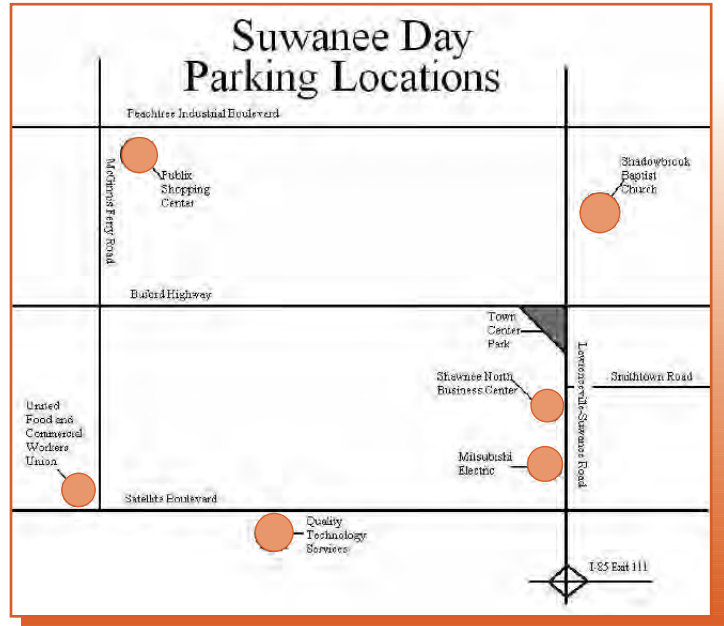
- Overall Winner
- Most Creative
- Best Use of Theme
- Grand Marshal's Favorite



This year's grand marshals are members of the Georgia Army National Guard's 48th Brigade.



photo by M. Michael Farr



Off-site parking, free shuttle make getting to festival hassle-free

Free shuttle transportation between designated off-site parking areas and Town Center Park will be available from 9 a.m.-11 p.m. on Suwanee Day.

Shuttles are air-conditioned, have storage space for strollers, and will travel non-stop to their designated parking areas.

Handicapped parking for individuals with disabilities is available at City Hall and the Suwanee Crossroads Center, 373 and 323 Buford Highway, respectively.

Suwanee Day off-site parking is available at:

- **Mitsubishi Electric**
3400 Lawrenceville-Suwanee Road
- **Publix @ McGinnis Ferry Crossing**
McGinnis Ferry & Peachtree Industrial Boulevard
- **Quality Technology Services**
300 Satellite Boulevard
- **Shadowbrook Baptist Church**
4187 Suwanee Dam Road
- **Shawnee North Business Center**
305 Lawrenceville-Suwanee Road
- **United Food & Commercial Workers Union**
3302 McGinnis Ferry Road

Suwanee Day 5K Classic is off and running

The annual Suwanee Day 5K Classic is sure to get you in shape for Suwanee Day. As this newsletter went to press, the race, sponsored by BodyPlex Family Fitness, was scheduled for 7 p.m. Friday, September 8. The 5K race course, which runs through historic Old Town, begins and finishes in Town Center Park.

If you're reading this newsletter on or before September 8, you can register for the race onsite beginning at 5 p.m.; the registration fee is \$20. Other Suwanee Day 5K Classic festivities include free inflatable rides for kids, food, and live music, from 5-9 p.m.

Festival t-shirts available

T-shirts with the official Suwanee Day 2006 logo will be available for purchase at the Festival Information booth and beginning September 7, at City Hall. The cost is \$10.

This year's design was created by Amy Maffei, a Buford resident who is the mother of two preschoolers and owner/creator of SugarBug Creations. Maffei's design, which includes symbols that represent Town Center Park and the Suwanee Day festival, was selected from among 57 entries from 31 artists who submitted designs in this year's Suwanee Day design competition, which once again is sponsored by Richport Properties.

The t-shirts available for purchase will be a pistachio green. Suwanee Day planning committee members will have these t-shirts on during the festival. Other volunteers will be wearing white t-shirts with the same design.



An artistic celebration of Suwanee Day Richport Properties hosted the official unveiling of the 2006 Suwanee Day logo at its model home in Village Grove. Among those present for the August 16 event were, from left, Tom Melton, vice president of homebuilding and sales with Richport Properties; Melissa Fernandez, Suwanee Day 2006 chairperson; Todd Renner, Suwanee Day marketing chairperson; artist Amy Maffei; and Suwanee City Councilmember Alan Landers, who also serves on the Suwanee Day planning committee.

Suwanee Day by the Numbers

0

Times that Suwanee Day has been entirely cancelled due to weather during its 23-year existence

1

Hurricanes that have "threatened" Suwanee Day. (Hurricane Ivan in 2004 caused a two-hour delay in the start time)

4

Different locations where the festival has been held (Initially, behind the current Gwinnett County Fire Station #13, then to a field where City Hall is today, then to Main Street and historic Old Town, and currently at Town Center Park)

15

Outstanding albums recorded by this year's featured entertainment: the Atlanta Rhythm Section

57

Entries in this year's Suwanee Day logo design competition

192

Booth spaces at Suwanee Day 2006

267

Volunteers expected to assist with Suwanee Day 2006

2,321

Approximate steps to be taken by participants in the just over one-mile Suwanee Day parade

About 30,000

Attendance at Suwanee Day 2005

Volunteering at Suwanee Day a fun way to get involved

It's probably not the free t-shirt that motivates most Suwanee Day volunteers. But whatever the motivation, the success of this annual "celebration of community" depends on hundreds of volunteers.

Each year, our vendors rave about the friendly and oh-so-helpful assistance that volunteers provide them for set up and tear down. Vendor assistance is only one of several jobs that volunteers perform, though. Suwanee Day volunteers also distribute posters, assist with parade line-up and help ensure that the crowd stays out of the roadway during the parade, snap photos, take shifts working the parking lots, and help clean up after everyone else is headed home.

It's not too late to volunteer to help out at Suwanee Day 2006. If you'd like to have a special role in this great community event—and, yes, if you'd like a free t-shirt—you can volunteer online at www.suwaneeday.com. Please be sure to register in advance.

Several clubs and organizations have coordinated efforts to provide groups of volunteers. "It's a great way for high school students to earn volunteer hours," notes Marcia Massie, this year's Suwanee Day volunteer coordinator.

Arts & Crafts

continued from page 9

items. Additional items available at Suwanee Day include homemade soda pop, reversible dog bandanas, handcrafted Raggedy Ann & Andy dolls, metal sculptures, handcrafted or wheel-thrown pottery, purses and decorative luggage, children's specialty items and fashion accessories for teens, gift baskets, doggie treats, soaps and aromatherapy mists, stuffed animals, and rocking chairs.



A 'thank you' to our sponsors

Suwanee Day is made possible each year by our incredible, generous sponsors. Thank you!

Signature



Platinum



© BELL SOUTH



Gold

AL Grading
Allied Waste
Gwinnett Daily Post
Karate World
Pre-Press to Printing
Touchstone Homes/Village Grove
Wild Wing Café

Silver

AVON
BB&T
Chandler, Britt, Jay & Beck
Clark Patterson Associates
Digital Entertainment (Dish Network)
Scott & Debbie Dovel
Duluth Montessori School
Gwinnett Community Bank
Hyatt Family Chiropractic
IDI
Jay Medical Clinic
Madison Retail
People's Bank & Trust
Pro-Tech Doors
Publix #615
Quantum Bank
Robins, Eskew, Farmer & Jordan PC
Sam's Club
Subway
T-Mobile
Wal-Mart
Washington Mutual

Bronze

The Fresh Market
Kroger
Mitsubishi Electric



Local ABA team makes Suwanee home



The Atlanta Vision, one of more than 30 teams in the American Basketball Association (ABA), has claimed the Suwanee Sports Academy as its new headquarters and home venue. The Vision, a men's professional team, will defend its 2005-06 ABA Division Championship beginning in November and will play 18 regular season home games through March at the Suwanee Sports Academy (SSA).

The original ABA merged with the NBA in 1976. The league was revived in 1999.

The Vision is led by General Manager Dennis Scott, a Georgia Tech Hall of Famer and NBA veteran. Professional basketball tryout camp will be held October 7 and 8 at SSA. For more information, visit www.theatlantavision.com.

At 100,000 square feet, the Suwanee Sports Academy, located at 3640 Burnette Road, is the largest privately owned facility in the country for basketball and volleyball training and competitive events.

Urban redevelopment appointments

At its August 15 meeting, City Council re-appointed Alex Stone as chairperson of Suwanee's Urban Redevelopment Agency (URA). His new term expires August 2008. Former City Councilmember Carol Hassell and former Downtown Development Authority chairperson Jerry Little were appointed to the URA as well for terms expiring in 2007 and 2008, respectively. Through the URA, the City has been able to obtain low-cost financing for City initiatives, such as the land purchase for the mixed-use portion of Town Center.

Staff members earn erosion control certification

Several City staff members recently obtained certification through the Georgia Soil & Water Conservation Commission. The state-required certification is for the review of erosion control plans and inspection of any development projects that involve land disturbance. Staff members who received certification include Josh Campbell, Susan Carpenter, David Maddox, Tony Rich, Wes Rogers, and Ed Story.

Mayor serving other cities, too

Mayor Nick Masino has been re-appointed to the Georgia Municipal Association (GMA) executive committee by Atlanta Mayor Shirley Franklin, this year's GMA president. Created in 1934, GMA is the only state organization that represents municipal governments in Georgia. Based in Atlanta, GMA is a voluntary, non-profit organization that provides legislative advocacy, educational, employee benefits, and technical consulting services to its members.



New businesses

During the month of July, the following businesses opened in Suwanee: Absolute Development...All In Sales, Inc... BB&T...Cartridge World Suwanee...The Contact Group...Creative Clayhouse...DNL Properties... Ewing Irrigation Products, Inc.... General Property Services, Inc....Inscape Landscapes, Inc.... Korea Express U.S.A., Inc....Legacy Systems and Graphics, Inc...Office Depot...Risk Management Partners...Southeast Coating, Inc....Southeast Corrections...Touchstone Homes... VA Software, Inc.

For scissors and more At the grand opening of Office Depot on August 10 are, from left, Cary Marsh, Office Depot district manager; Mayor Nick Masino and his son, Vincent; Allen McGovern, store manager; and Jackie Ginn, corporate accounts manager with the Gwinnett Chamber of Commerce.



CITY OF SUWANEE

373 U.S. HWY. 23
SUWANEE, GA 30024

PRSR STD
U.S. POSTAGE
PAID
SUWANEE, GA
PERMIT NO. 242

CrossRoads – Your Official City of Suwanee Newsletter

Calendar

September

- | | | |
|----|-------------------------------------|-----------------|
| 5 | Planning & Zoning Commission | 6:30 p.m. |
| 7 | City Council Workshop | 5:30 p.m. |
| 8 | Suwanee Day 5K Classic (TCP) | 7 p.m. |
| 9 | Suwanee-Duluth Farmers Market (TCP) | 8 a.m.-noon |
| 13 | Suwanee Business Alliance | 6 p.m. |
| 16 | Suwanee Day (TCP) | 10 a.m.-10 p.m. |
| 19 | City Council Meeting* | 7 p.m. |
| 21 | Downtown Development Authority | 12 p.m. |
| 23 | Suwanee-Duluth Farmers Market (TCP) | 8 a.m.-noon |
| 26 | Zoning Board of Appeals | 6:30 p.m. |
| 30 | Amigos for Christ Fiesta (TCP) | 12-8 p.m. |

October

- | | | |
|----|--|----------------|
| 3 | Planning & Zoning Commission | 6:30 p.m. |
| 5 | City Council Workshop | 5:30 p.m. |
| 11 | Suwanee Business Alliance | 6 p.m. |
| 17 | City Council Meeting* | 7 p.m. |
| 19 | Downtown Development Authority | 12 p.m. |
| 24 | Zoning Board of Appeals | 6:30 p.m. |
| 26 | Alternative Transportation Open House (NGHS) | 5-7 p.m. |
| 27 | Halloween Movie Night | 7 p.m. |
| 28 | Trek or Treat | 11 a.m.- 1p.m. |

November

- | | | |
|-------|--|-----------|
| 7 | Planning & Zoning Commission | 6:30 p.m. |
| 8 | Suwanee Business Alliance | 6 p.m. |
| 9 | City Council Workshop | 5:30 p.m. |
| 16 | Downtown Development Authority | 12 p.m. |
| 21 | City Council Meeting* | 7 p.m. |
| 23-24 | Thanksgiving Holiday: City Hall closed | |
| 28 | Zoning Board of Appeals | 6:30 p.m. |

Unless otherwise noted, all City meetings are now being held at the Crossroads Center, 323 Buford Highway.

**Public hearing begins at 6:30 p.m.*

TCP=Town Center Park

All meetings and events are subject to change.

City of Suwanee, Georgia

- | | |
|--------------------|---|
| MAYOR: | NICK MASINO770/945-4607 ext. 555 |
| COUNCIL: | JACE BROOKS770/831-0499 |
| | JIMMY BURNETTE770/945-3492 |
| | DAN FOSTER770/614-5750 |
| | ALAN LANDERS770/271-4382 |
| | JEANNINE RISPIN404/375-6095 |
| CITY MANAGER: | HARDIN WATKINS770/945-8996 |
| POLICE CHIEF: | MIKE JONES770/945-8995 |
| NEWSLETTER EDITOR: | |
| | LYNNE BOHLMAN DeWILDE770/945-8996 |